



Roxtec ComSeal™

IP 55 rated entry seals with aluminum frame.

The Roxtec ComSeal™ is rated for IP 55 and available with powder coated aluminum and AISI 316 stainless steel frames. The transit is available in six different sizes to accommodate up to 32 cables.



- Rodent resistant
- Corrosion resistant
- Light-weight
- Area efficient

Product characteristics



IP/UL NEMA

Structure of installation



Cabinets & enclosures

Mounting type



Bolting

Ratings & certificates

Tightness

- IP 55, UL/NEMA 3,12,12K

Frame dimensions

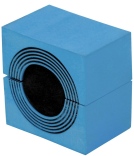
mm/kg

The frame variants below are a limited selection. For the full range of frames and configurations, please visit [roxtec.com](https://www.roxtec.com).

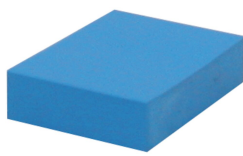
Product	Frame openings	Packing space	External dimensions WxHxD	Aperture dimensions w x h	Weight	Art. no
COMSEAL 10 FRAME ASSEMBLY	1	40 x 100	80.5 x 173 x 55	56(+1/-1) x 149(+1/-1)	0.34	105300

Sealing components

Sealing components



CM module with Multidiameter™



CM solid compensation module



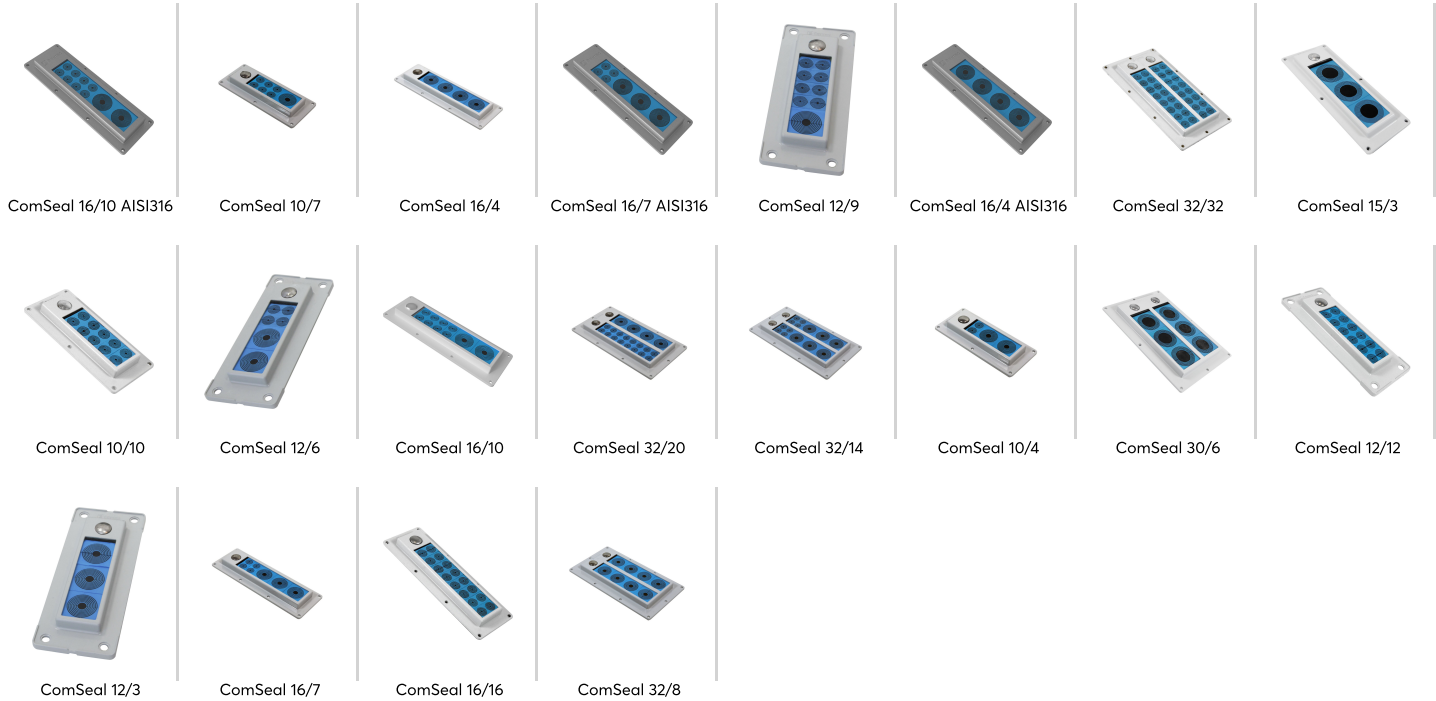
Assembly Gel

For detailed information, please visit [roxtec.com](https://www.roxtec.com).



Pre-configured transit kits

mm/kg



Product	Configuration	External dimensions WxHxD	Aperture dimensions w x h	Weight	Art. no
ComSeal 16/10 AISI316	2x (9.5-32.5), 8x (3.5-16.5)	81 x 233 x 33	58.5(+1/-1) x 211(+1/-1)	1.5	105681
ComSeal 10/7	6x (3.5-16.5), 1x (9.5-32.5)	80.5 x 173 x 55	56(+1/-1) x 149(+1/-1)	0.6	105301
ComSeal 16/4	4x (9.5-32.5)	80.5 x 233 x 55	56(+1/-1) x 209(+1/-1)	0.8	105310
ComSeal 16/7 AISI316	3x (9.5-32.5), 4x (3.5-16.5)	81 x 233 x 33	58.5(+1/-1) x 211(+1/-1)	1.5	105680
ComSeal 12/9	8x (3.5-16.5), 1x (9.5-32.5)	88 x 216 x 55	56(+1/-1) x 169(+1/-1)	0.8	105306
ComSeal 16/4 AISI316	4x (9.5-32.5)	81 x 233 x 33	58.5(+1/-1) x 211(+1/-1)	1.5	105679
ComSeal 32/32	32x (3.5-16.5)	135 x 241 x 55	103(+1/-1) x 209(+1/-1)	1.4	105322
ComSeal 15/3	3x (28.0-44.0)	90.5 x 223 x 55	61(+1/-1) x 195(+1/-1)	0.9	105308
ComSeal 10/10	10x (3.5-16.5)	80.5 x 173 x 55	56(+1/-1) x 149(+1/-1)	0.6	105302
ComSeal 12/6	2x (9.5-32.5), 4x (3.5-16.5)	88 x 216 x 55	56(+1/-1) x 169(+1/-1)	0.8	105305
ComSeal 16/10	2x (9.5-32.5), 8x (3.5-16.5)	80.5 x 233 x 55	56(+1/-1) x 209(+1/-1)	0.8	105313
ComSeal 32/20	4x (9.5-32.5), 16x (3.5-16.5)	135 x 241 x 55	103(+1/-1) x 209(+1/-1)	1.4	105321
ComSeal 32/14	6x (9.5-32.5), 8x (3.5-16.5)	135 x 241 x 55	103(+1/-1) x 209(+1/-1)	1.4	105320
ComSeal 10/4	2x (9.5-32.5), 2x (3.5-16.5)	80.5 x 173 x 55	56(+1/-1) x 149(+1/-1)	0.6	105299
ComSeal 30/6	6x (28.0-44.0)	155 x 231 x 55	120(+1/-1) x 195(+1/-1)	1.6	105315
ComSeal 12/12	12x (3.5-16.5)	88 x 216 x 55	56(+1/-1) x 169(+1/-1)	0.8	105307
ComSeal 12/3	3x (9.5-32.5)	88 x 216 x 55	56(+1/-1) x 169(+1/-1)	0.8	105303
ComSeal 16/7	3x (9.5-32.5), 4x (3.5-16.5)	80.5 x 233 x 55	56(+1/-1) x 209(+1/-1)	0.8	105312
ComSeal 16/16	16x (3.5-16.5)	80.5 x 233 x 55	56(+1/-1) x 209(+1/-1)	0.8	105314
ComSeal 32/8	8x (9.5-32.5)	135 x 241 x 55	103(+1/-1) x 209(+1/-1)	1.4	105316

The product information provided by Roxtec does not release the purchaser of the Roxtec system, or part thereof, from the obligation to independently determine the suitability of the products for the intended process, installation and/or use.

Roxtec gives no guarantee for the Roxtec system or any part thereof and assumes no liability for any loss or damage whatsoever, whether direct, indirect, consequential, loss of profit or otherwise, occurred or caused by the Roxtec systems or installations containing components not manufactured by an authorized manufacturer and/or occurred or caused by the use of the Roxtec system in a manner or for an application other than for which the Roxtec system was designed or intended.

Roxtec expressly excludes any implied warranties of merchantability and fitness for a particular purpose and all other express or implied representations and warranties provided by statute or common law. User determines suitability of the Roxtec system for intended use and assumes all risk and liability in connection therewith. In no event shall Roxtec be liable for indirect, consequential, punitive, special, exemplary or incidental damages or losses.

The Roxtec products are offered and sold in accordance with the conditions of the Roxtec General Terms of Sales. The latest version of the Roxtec General Terms of Sales can be downloaded from <https://www.roxtec.com/en/about-us/about-roxtec/general-terms-of-sales/>

We reserve the right to make changes to the product and technical information without further notice. Any errors in print or entry are no claims for indemnity. The content of this publication is the property of Roxtec International AB and is protected by copyright.

This document was generated on: 2024-04-26